

# The Next Generations of Nels O and Nella Ihle

---

## Kenneth, Mervin, Otis and Nilus

The description of the events, after approximately 1924, that shaped the history of the Nels O. and Nella Ihle involves a woven complex between the brothers and their children. Nels O was able to provide for his sons and ultimately each son had their own farm. Nilus resided on the initial farm while Otis and Mervin had farms in the same section within a mile of the home farm that Nels O purchased. Kenneth live about a mile away in another farm that Nels O had purchased.

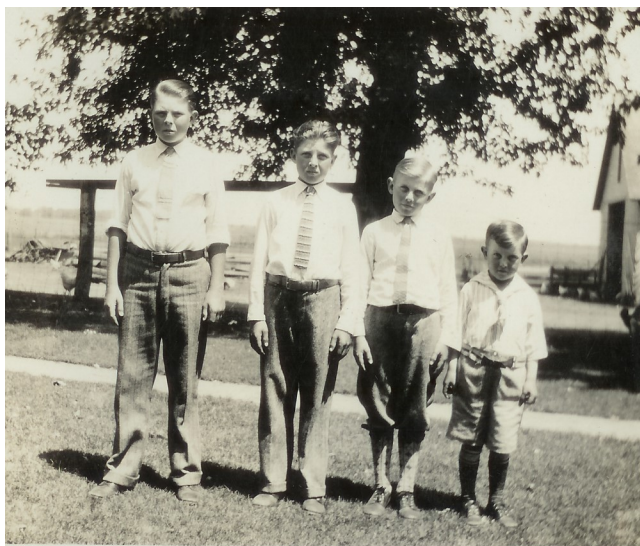
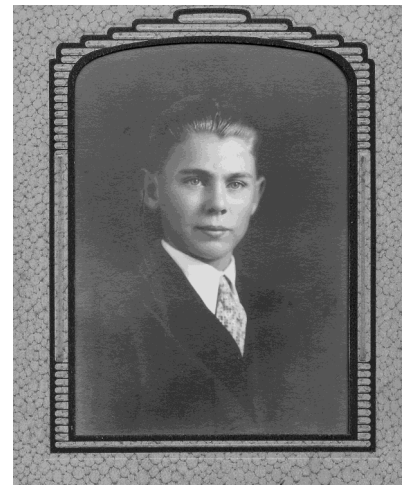
In addition to the proximity of homes, the brothers married and had children that were of the same age or very close. This coupled with the long commitment to Nella made for a very cohesive future as will be illustrated through this section on the next generations of Nels O and Nella Ihle



Just a few pictures of the boys from the old days.

Right, formals of Kenneth and Mervin.

Left top Otis and Mervin with unknown.



Left bottom the four boys



# The Next Generations of Nels O and Nella Ihle

---

## Mervin

Mervin was born March 2, 1917 in Slater, Iowa. Early events included the trip to Norway in 1923 and attending school at the Bloomfield School and subsequently Slater where he graduated in 1935.



Slater High School: October 23, 1933: Mervin 5th from right, first row.



## The Next Generations of Nels O and Nella Ihle

---

### Mervin



Being Lutheran also required confirmation and Mervin's confirmation class picture is shown. Confirmation was held on 8th of November, 1931. JI has the complete roster of those confirmed.



Mervin enter the Navy on January 13, 1942 in Des Moines and served until Sept. 11, 1945. During that period he attended flight school although never served as a pilot. He was stationed at several sites including Navy Pier in Chicago, Pearl Harbor, Port Huenema California and Ouonsit Point Rhode Island. Mervin was a striking military member.



## The Next Generations of Nels O and Nella Ihle

---

### Mervin Finds A Wife

Enlisting in the Navy and choosing to go to flight school was in part due to his admiration of his cousin Everett S. a pilot. Nevertheless, it resulted in his being stationed at Navy Pier in Chicago. Nella Ihle's sisten Gurine lived in Chicago and had sons Karl and Kermit Tangeros. Consequently Mervin hung out with Karl and Kermit on his time off. They both knew a Chicago gal that they thought would be perfect for Mervin, Claire Schumacher and so things go.



Clair was a striking gal (left) who Mervin wanted to be his wife. They ultimately married on October 14, 1944 in Quonset Point, Rhode Island in the presence of the close friends shown below. After marriage they returned to Chicago and stayed until late 1946 for reasons that will become obvious.



# The Next Generations of Nels O and Nella Ihle

---

## Clara's Route to Chicago and Mervin

It was pure fate that placed Clara in Chicago so her geneology is best given in reverse. Clara was born the 29th of April of 1922 in Emmet, Wisconsin the last of the 9 children of John and Clara Shumacher of Marathon City, Wisconsin. Unfortunately her mother died on April 30, 1922, due to complications from the birth. With a family of 8 additional children, John was unable to care for the new baby girl and fortunately there was a family that was willing to take her into their family. Ralph (born 1863, in Italy and immigrated to the US in 1885) and Mary (born 1874 in Wisconsin) Rossi had a daughter Clara Rossi (born 1898) and lived in Emmet Wisconsin. In the 1920 census they lived in Bryant, Washington with their daughter and her husband (Anton and Clara Wagner) and had just returned to Wisconsin. Shortly after returning they moved to Chicago and in the 1930 census lived in Chicago with his wife Mary and Clara Schumacher, age 7. Ralph died in 1934 leaving Mary to raise Clara alone.



Mervin with Mary Rossi



Clara attended a Catholic girls school, more later on this but the picture above right is her graduation picture.

## **The Next Generations of Nels O and Nella Ihle**

---

### **Mervin and Clara: A New Baby and a Move to Iowa**

It didn't take Mervin long to start a family and the first son (James) was born on August 16, 1945 in Chicago Illinois. Remember married 14th of October 1944 and leaving active service on 11th September 1945. After separating from the Navy, Mervin took Clara, baby and Gradma Rossi to Iowa to start making a living at farming.

Gradma Rossi caring for baby Jim in  
Chicago



An early trip home to Iowa to show  
off the new bride.

